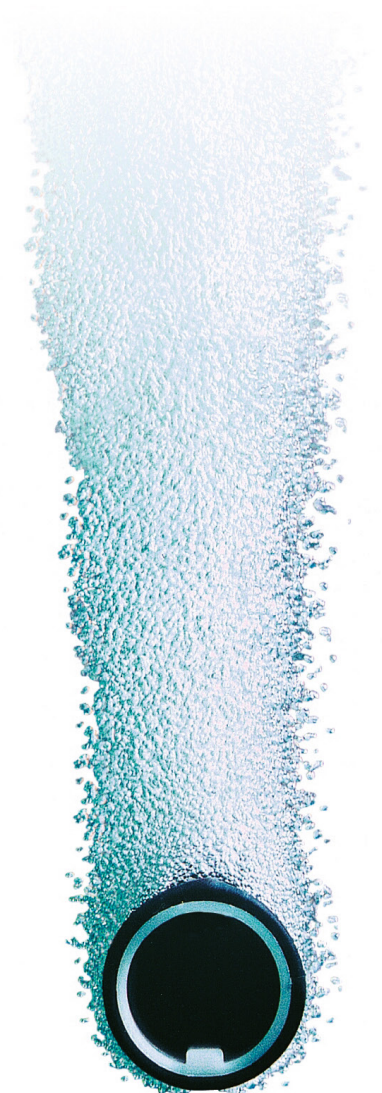


Oxygen Transfer Technology

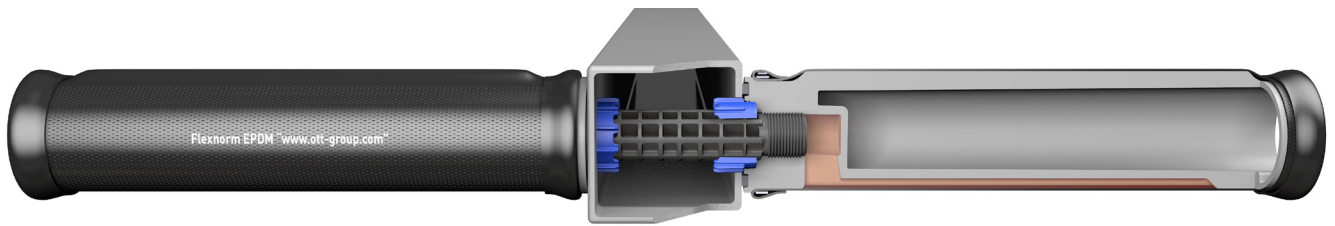
Efficiency by Design



STANDARD 2

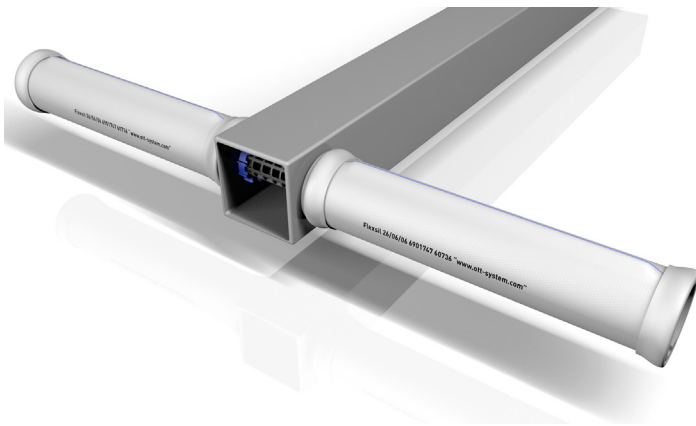


STANDARD 2: Versatile Connection Options For Round and Rectangular Headers

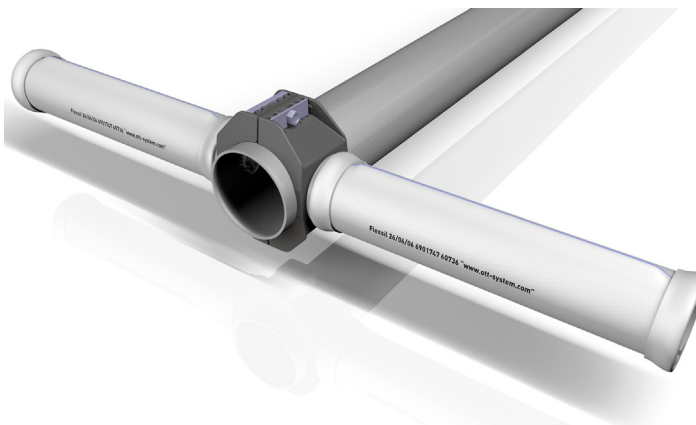


STANDARD 2 is the ideal tube diffuser for retrofit installation in existing wastewater treatment facilities.

Like all OTT tube diffusers, **STANDARD 2** incorporates patented engineering features including an integrated air channel for uniform air flow distribution along the diffuser's length and a membrane mounting ridge ensuring secure and wrinkle-free membrane positioning.

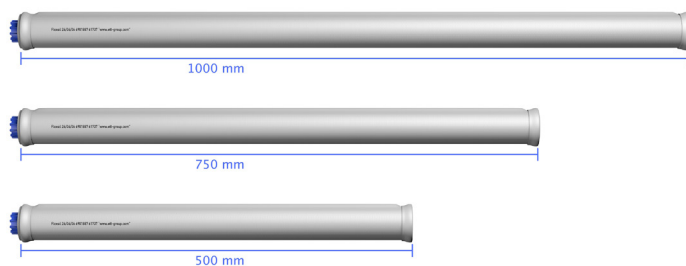


STANDARD 2 diffusers are installed quickly and easily on rectangular headers with 40 or 45 mm (1.57" or 1.77") diameter outlet openings. They are installed in pairs using double-threaded connectors available in engineering plastic PP-GF or VA-grade stainless steel.



STANDARD 2 diffusers can also be installed on round headers with 20 mm (0.79") diameter outlet openings. A saddle-contoured adapter ensures secure mounting.

These rugged adapters provide reliable service at high operating temperatures along with outstanding resistance to formic acid.



STANDARD 2 tube diffusers are available from stock in effective lengths of 500, 750 and 1000 mm (19.69", 29.53" and 39.37").

Custom lengths, e.g. for trailer-mounted treatment units or MBR modules, can be fabricated in exact accordance with your specifications.

For **STANDARD 2** Installation Video and Installation Instructions, please visit our website www.ott-group.com

OTT Membranes for STANDARD2 Diffusers

At OTT, we are convinced that the performance, cost efficiency and service life of a wastewater aeration system are determined primarily by the quality of its membranes. We therefore manufacture our membranes with strict in-process quality control, closely monitoring key properties including pressure drop and bubble-pattern uniformity.

Customers use our diffuser membranes in highly diverse applications. These include conventional municipal and industrial activated basins, MBR and fixed-bed systems and even fish farms. Accordingly, OTT tubular membranes are available in a variety of customizable materials: EPDM (**FLEXNORM®**) and silicone (**FLEXSIL®**).



FLEXNORM® – the bioresistant workhorse

FLEXNORM® membranes are recommended for aeration of municipal wastewaters. They are formulated with a biologically resistant plasticizer which reduces shrinkage and age-related stiffening.

Their high-quality formulation ensures long service life even at air temperatures up to 80°C (176°F).



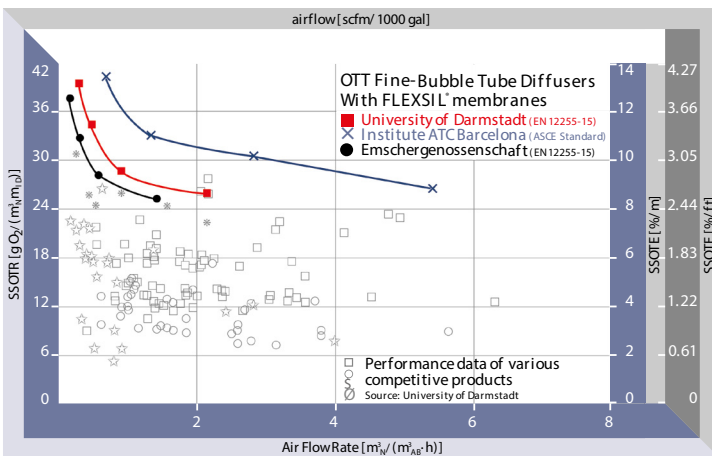
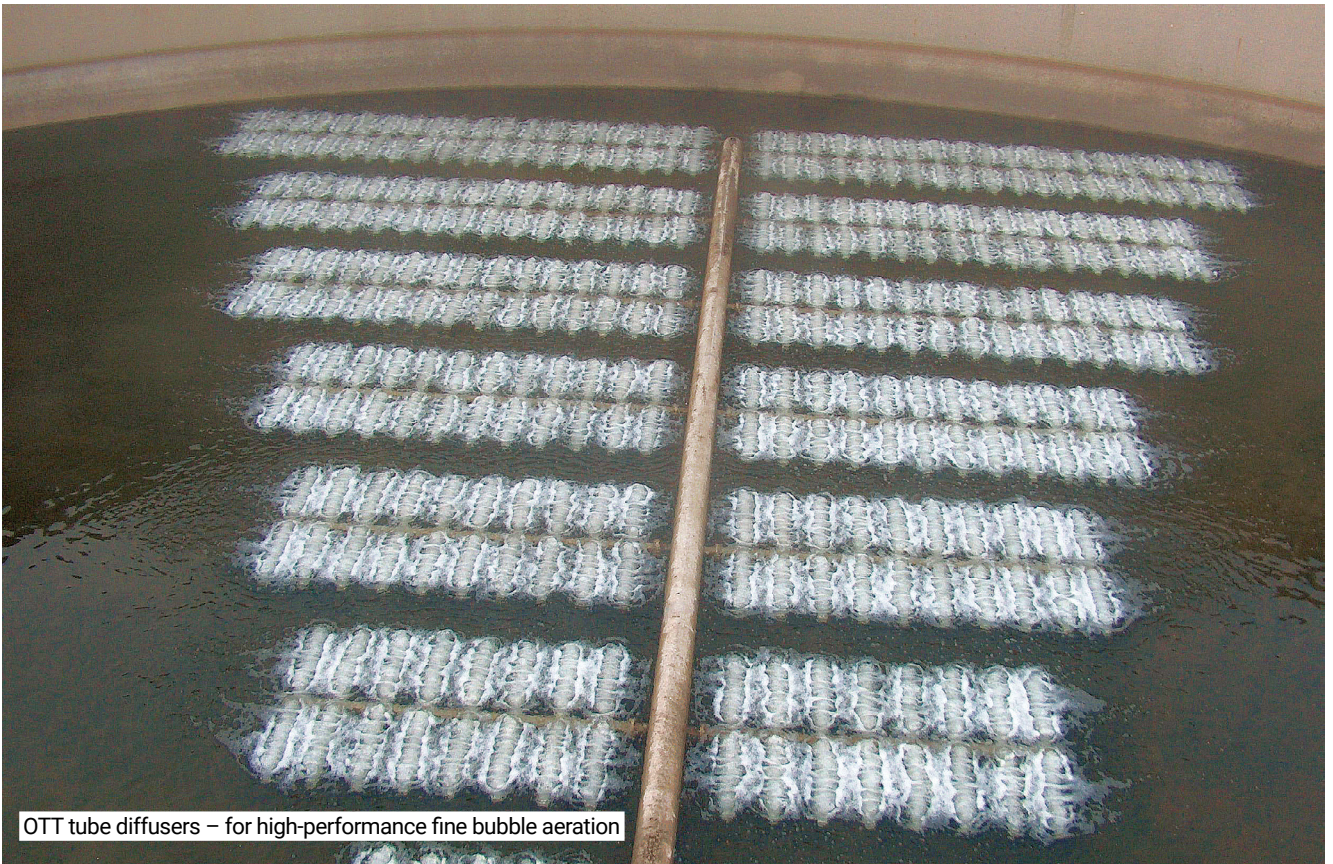
FLEXSIL® – efficient and durable

FLEXSIL® membranes are recommended for use with challenging wastewaters and in aeration systems designed for maximum efficiency and service life.

They are well suited for applications in deep basins, with heavily polluted wastewaters and/or at temperatures up to 140°C (284°F).

This membrane is not subject to age-related stiffening and exhibits outstanding chemical resistance to a wide range of chemicals, oils and greases.

STANDARD 2 Fine-Bubble Tube Diffusers from OTT: Unsurpassed Efficiency and Quality



Oxygen transfer efficiency data from independent test institutes with full-floor coverage of basin. Complete test reports available on request.



Member of
**German Water
Partnership**

info@ott-group.com
www.ott-group.com

